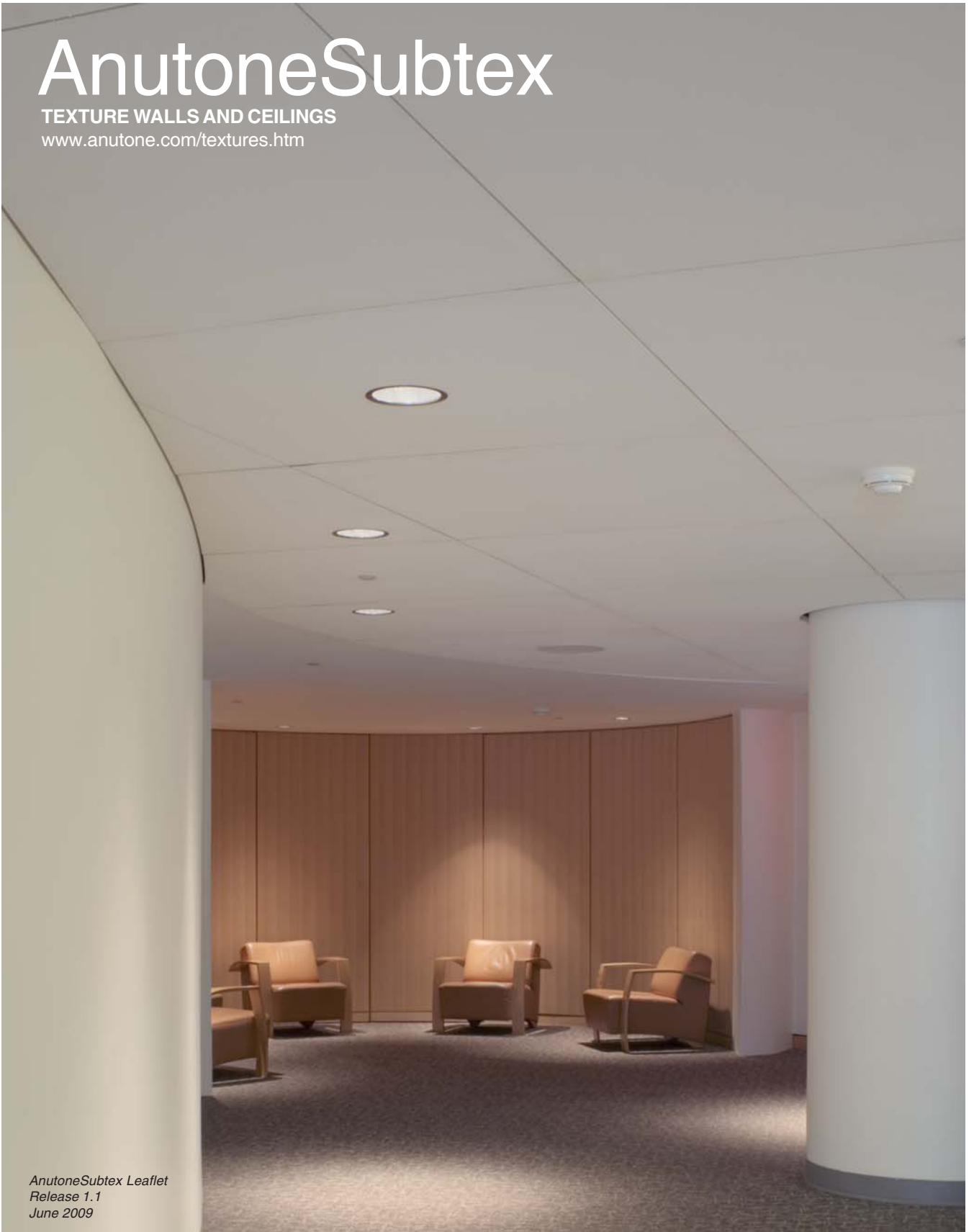


AnutoneSubtex

TEXTURE WALLS AND CEILINGS

www.anutone.com/textures.htm



AnutoneSubtex

TEXTURE WALLS AND CEILINGS

Key Attributes

Anutone introduces high quality, high aesthetic, high NRC, ceiling tiles and panels.

AnutoneSubtex are designed for areas requiring high NRC sound absorption with equally high light reflectance or light absorption. They are 0.9 NRC ceiling tiles whose engineered surface aids indirect diffused lighting.

Applications

AnutoneSubtex are used in those interior spaces where white or black modular tiles are preferred, like

- Office - open-plan offices, computer rooms
- Audi - auditorium, community halls
- Mall - departmental stores, retail spaces
- Education - classrooms, lecture halls
- Airport - terminals, buildings
- Cinema - multiplexes, home theatres

and other areas requiring low reverberation time and a high-quality, white-textured or black surface finish with high humidity tolerance and easy access to the plenum - an incredible combination of aesthetics, acoustics and functionality.

Construction

Core – AnutoneSubtex ceiling tiles consist of a dimensionally stable, rigid, high-density fine-micron fibre-core laminated with a specially formulated textured mat. Tiles do not shrink or warp.

Edges – Edges are protected with resin hardening. However, the tiles are fragile and require careful handling.

Surface – The acoustically transparent painted finish completely covers the face and exposed edges. The surface is very durable, scratch resistant and easy to clean. Tiles can be vacuum cleaned or even wiped with damp cloth. The reverse surface is finished with single, smooth tissue.

Aesthetics

Besides being durable and performing, the AnutoneSubtex texture ceilings compliment the aesthetic appeal of the space in that

- The edges are Square, Steppe, Concealed A and Concealed C (suitable for mechanical fastening)
- Steppe edge, post-install, appears suspended from the ceiling, giving out a unique floating visual
- Concealed edge is butt-jointed and fine-bevelled that conceals the T-grid posing as an almost seamless look
- They come in factory-finished texture with four finishes
 - Plane - dull white
 - Nubby - bright white
 - Pebble - speckled white
 - Ebony - black
 that are nondirectional and makes a monolithic appeal
- They can be supplied in a good range of colours too, to precisely match any interior design palette



PRODUCT HIGHLIGHTS

High NRC

0.9 NRC broadband sound absorption; highest for modular ceilings

Surface

White surface finish with fine monolithic texture for high light reflectance; less lighting requirements. Black surface for full light absorption

Large Format

1200x1200mm tile sizes means less framework; better aesthetics, faster install

Light Weight

At 1.5-3kgs/m², does not contribute significantly to structural load of building

Fast Track

Panels can be laid in T-grids even after fitouts/capeting; large size means 4-tiles-in-1-tile install

Dimensions

AnutoneSubtex Tile	Thickness	AnutoneSkelet O15 / U15 / T15 / T24
595 x 595	15	600 x 600
595/1195 x 595/1195	20	600/1200 x 600/1200
1195 x 1195	25	1200 x 1200

(all dimensions in mm)

Installation

Lightweight and fragile, AnutoneSubtex needs careful handling, fabrication and installation. AnutoneSubtex are installed as a lay-in tile in AnutoneSkelet T15 / U15 / O15 framework for suspended modular ceilings. Tiles can be easily removed for maintenance of services in the plenum void.

AnutoneSubtex are installed on AnutoneSkelet T24 as a concealed edge tile wherein the suspension system is not visible. A 4mm fine bevel edge provides neat straight lines.

AnutoneSubtex are also installed on AnutoneSkelet Screenline and Infinity systems for Carnival Floats. A complete system of perimeter trims, transitions, bulkheads is available.



Moisture Resistance

AnutoneSubtex ceiling tiles are unaffected by humidity upto RH90 as per ISO 4611.

Light Reflectance

AnutoneSubtex ceiling tiles due to their fine monolithic texture have a high light reflectance - Plane 82 per cent; Nubby 85 per cent; Pebble 80 per cent.

Green Performance

AnutoneSubtex ceiling tiles utilise a core that is eligible to bear the Green Cross label for recycled content. The tile on an average contains 35 per cent recycled glass, with 9 per cent post-consumer and 26 per cent pre-consumer content.



For LEED ratings, AnutoneSubtex qualifies for recycled content points under the Materials and Resources section. Other LEED categories also apply depending upon project requirements. For example, high light reflectance ensures less lighting requirements for interiors thus saving power and reducing the carbon footprint.

AnutoneSubtex does not require antimicrobial treatment with fungicide added to inhibit the growth of mould or mildew.

Paintable

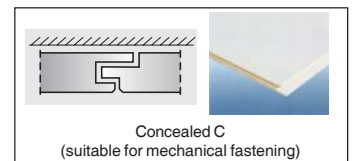
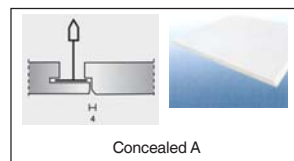
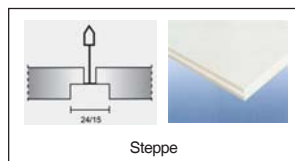
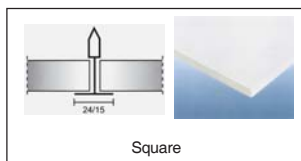
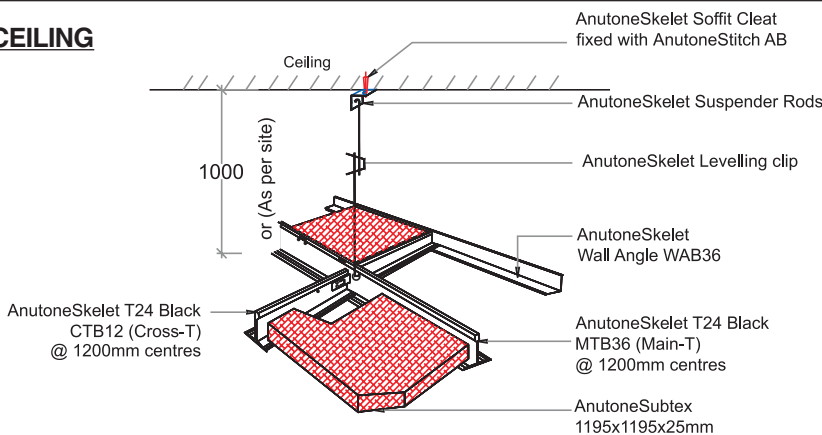
AnutoneSubtex Plane is primer-finished and provides an excellent paintable surface for any colour of choice in acrylic emulsion without any significant loss of acoustical properties.

Warranty

AnutoneSubtex ceiling tiles come with a limited 10 year warranty starting from the date of purchase (not installation). The tiles are warranted to be free from defects in material and workmanship. Tiles will not sag provided they are installed on AnutoneSkelet framework in accordance with Anutone guidelines.

Installation Drawings

CEILING



Note: For walls, Square, Steppe and Concealed A edge can be installed with AnutoneSkelet Screenline system. Concealed C edge can be installed on AnutoneStrut systems with mechanical fasteners.

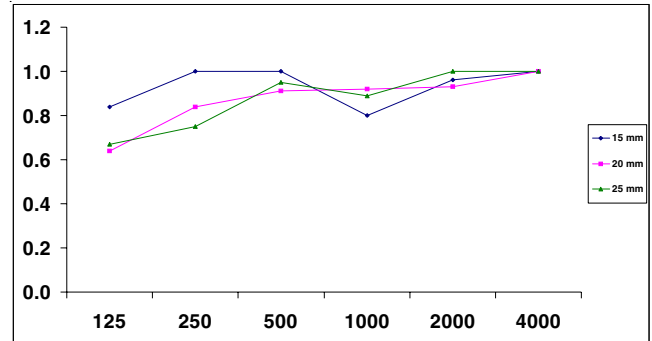
Fire Performance

AnutoneSubtex ceiling tiles have been tested to ASTM E84 and have a Class I/A rating.

Acoustical Performance

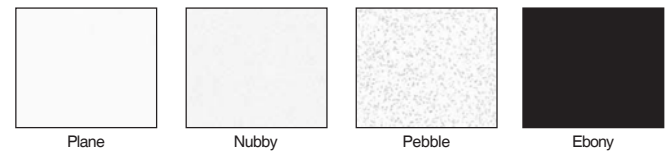
AnutoneSubtex ceiling tiles provide high NRC performance for offices, classrooms, shopping centres, community halls, public places like airports and virtually any space where very high sound absorption is required.

15 mm – NRC 0.94; 20 mm NRC 0.90; 25 mm – NRC 0.90



Thickness (mm)	Octave Band Centre Frequencies - Hz						NRC
	125	250	500	1000	2000	4000	
15	0.84	1.00	1.00	0.80	0.96	1.00	0.94
20	0.64	0.84	0.91	0.92	0.93	1.00	0.90
25	0.67	0.75	0.95	0.89	1.00	1.00	0.90

Visual Variants



PANELLING

