

Smooth Strand Trax

www.anutone.com/strandtrax.htm

Release # 1.4 - March 2011

anutone[®]
makes you feel good™

Key Attributes

The unique random twirls of fibre construction with a texturised surface finish and embossed V-grooves sets Strand Trax apart in choice of acoustical panels for architectural spaces. A natural 'breathing' panel with the timeless appeal of embossed fibres sharply contrasts the smooth surfaces of glazing, dry walls and stone floors prevalent in today's interiors.

Typical Applications

Strand Trax is used exposed for acoustical ceilings and wall panellings in educational institutions, public spaces, worship spaces, etc.

Aesthetics

Strand Trax provides a value-added look with V-grooves. It's uniqueness lies in that it can be installed vertically or horizontally. Spaces can be made to look taller or longer. Due to Strand Trax featuring chamfer long edges the V-grooves appear continuous and seamless when panels are butt-jointed.

Visual Variants

The visual variants for Strand Trax are realised when the panels are factory or insitu spray painted in a range of bold colours or pastel shades.



Design considerations

Strand Trax features long edges chamfered that can be butt-jointed. However, the short edges must be staggered. Strand Trax can only be installed on a concealed framework like Profiles C-System. For ceilings, T-grids is not an option. Orientation of lighting to highlight the V-grooves must be considered.

Features

- Densities

400	600	800	kgs/m ³
ND4	HD6	VHD8	Code
 - Sizes - Width - 600mm; Lengths - 1200 / 2400 mm
 - Thickness - 20 / 25 / 30 / 40 / 50 mm
 - Custom, Non-metric, Flexi / odd sizes are not possible
- Strand Trax conforms to EN 13168 2001.

Accessibility

Strand Trax installed on Strut C-system requires unfastening and refastening of Stitch for accessibility. Fastener marks can be camouflaged with Seam. Strand Trax 30mm can be installed on the fastener-less H-Spline.

Logistics

Thk (mm)	Nos./carton	Carton wt* (kgs)	Carton size (mm) 1216L x 616W x 175H
20	08	52	
25	06	47	
30	05	58	
40	04	56	Volume 0.131 m ³
50	03	47	

* For Strand ND4 Trax. Minimum order quantity - 1 carton.

Economics

Strand Trax ND4 20mm on Strut C-system is technologically economical for the lifecycle cost of the system.

Framework

- C-system for ceilings, panellings, partitions - concealed
- F-Spline for panellings of 30, 40 & 50 mm thickness only - fastener-less, quick installation

Tech Performance

- Non-combustibility - Mass loss 53% @ 750 °C - ISO 1182
- Ignitibility - 'P' - BS 476 Part 5
- Fire Propagation Index - 5.17 - BS 476 Part 6
- Surface Spread - Class I - BS 476 Part 7
- Specific Optical Density of Smoke - Flaming Exposure 26.28 Dm (Corr) - ASTM E662
- Thermal Conductivity - 0.08 Wm/k - IS 3346

Environmental Impact

Strand Trax is eco-friendly and wins 15 LEED points, a AnutoneSustain effort by Anutone®.

Site Considerations

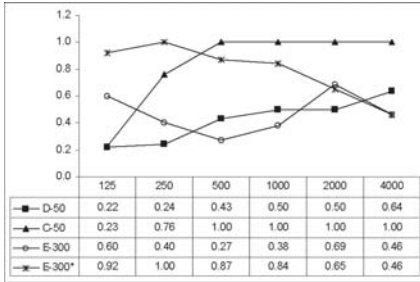
Strand Trax must be stored on a flat surface and if panels come in contact with water accidentally they must be air-dried prior to installation. Installation surfaces must be dry and level. Orientation of the C-system framework and V-grooves of Strand Trax must follow the approved architectural design and drawings. Strand Trax can be vacuumed post-installation.

Warranty

10 years Surety - limited warranty - on the assembled system when installed Anutone's specifications and maintained as per instructions.

Acoustical Parameters

Sound Absorption Coefficient as per ISO 354



Strand Trax ND4 20 mm thick

NOTE - Anutone has the capability, expertise and own infrastructure to perform custom acoustics tests for given design as per ISO 354 at its AnutoneScans lab and provide acoustic values of Strand Trax specific to installations.



BITS Goa - Strand Trax on rear walls in lecture halls

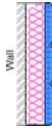
Installation Guidelines

Ceiling (E300* mounting) – Scope - Design, Supply, Build of Strand Trax per approved drawings and specifications, by Anutone Acoustics Limited, an ISO 9001 2000 company. **Framework** - Strut C-System consisting of Main and Cross Channels at 1200 & 600 mm centres respectively. **Acoustical panels** - Strand Trax Density ND4; Size 600x1200 mm; Thickness 20 mm; installed on the Strut C-system with Stitch. Fastener heads are camouflaged with Seam. **Acoustical infill** - Synth PF 10x50 overlaid on the panels. **Joints and finish** - Chamfered long edges, staggered short edges, butt-joined. No Seam is applied between joints.

Panelling (D50 mounting) – Scope - Design, Supply, Build of Strand Trax as designed, manufactured and installed, per approved drawings and specifications, by Anutone Acoustics Limited, an ISO 9001 2000 company. **Framework** - Strut C-System, consisting of Cross Channels fixed at 600mm centres, using Stitch. Channels must be perpendicularly installed in relation to the long edges of the panels. **Acoustical panels** - Strand Trax Density ND4; Size 600x1200mm; Thickness 30 mm installed on the Strut C-system with H-Spline. **Joints and finish** - Chamfered long edges, staggered short edges, butt-joined. No Seam is applied between the joints.

Installation Drawings

Section of
C50
mounting



Elevation
of 600 x
2400 mm
panel

SoundSites™

For the latest update on our projects list please visit www.anutone.com/projects or contact AnutoneSquad.

Custom Methodology

The installation of Strand Trax can be custom-designed to suit specific or special project requirements. The methodology includes the entire value-chain - site evaluation, criteria definition, noise spectra capture, design optimisation, system specs, systems engineering & integration, project management, testing & site validation.

Ordering Information

Interior application, Installation application, Binder type, Surface finish, Core content, Dimensions, Edge Profile, Painting, Framework, Hardware, Acoustical infill, Packing.

anutone®
makes you feel good™

ANUTONE WALLS & CEILINGS

a division of Anutone Acoustics Limited

231, 7th Cross, Indiranagar 1st Stage, Bengaluru 560 038, India
Phone +9180 2520 3114 Fax +9180 2520 3115 info@anutone.com

MUMBAI

+9122 2643 9732

DELHI

+9111 2437 8061

CHENNAI

+9144 4305 4935

www.anutone.com



Anutone is member of

