

# AnutoneSmooth

[www.anutone.com/naturals.htm](http://www.anutone.com/naturals.htm)

Release # 1.2 - May 2009

**anutone**<sup>®</sup>  
makes you feel good™

## Key Attributes

The unique random twirls of fibre construction and texturised surface finish sets AnutoneSmooth apart in choice of acoustical panels for architectural spaces. A natural 'breathing' panel with the timeless appeal of fibres sharply contrasts the smooth surfaces of glazing, drywalls and stone floors prevalent in today's interiors. Products similar to SoundSmooth® are the hallmark of Euro buildings.

## Aesthetics

AnutoneSmooth boasts of a textured surface and edge treatment is important for installed aesthetics. For ceilings, AnutoneSmooth has edge profiles in Square, Reverse steppe, Steppe, Steppe Chamfer. For panellings, edge profiles consist of Radius, Chamfer, Tongue-Groove & H-Spline groove.



## Typical Applications

AnutoneSmooth is used exposed for acoustical ceilings and wall panellings or as an acoustical substrate for finishing systems like FabStretch™ for all architectural spaces.

## Features

- Densities
 

250	400	600	800	500	kgs/m <sup>3</sup>
LD3	ND4	HD6	VHD8	VDH™	Code
  - Sizes - Width - 600mm; Lengths - 1200 / 2400 mm
  - Thickness - 10 / 15 / 20 / 25 / 30 / 40 / 50 mm
  - Custom sizes - Nominal 595x1195 mm suits 600x1200mm grids; Non-metric 610x1200 mm suits 2'x4' grids; Intermediate lengths 600 / 1800 mm.
- AnutoneSmooth conforms to EN 13168 2001.

## Accessibility

AnutoneSmooth in AnutoneSkelet T-system makes it modular and dismantable for plenum access to services in the ceiling void. AnutoneSmooth installed on AnutoneStrut C-system requires unfastening and refastening of AnutoneStitch fasteners.

## Logistics

Thk (mm)	Nos./carton	Carton wt (kgs)	Carton size (mm) 1226L x 616W x 175H
10	15	57	
15	10	51	
20	08	52	
25	06	47	
30	05	58	
40	04	56	
50	03	47	

Volume  
0.132 cm<sup>3</sup>

## Site Considerations

AnutoneSmooth must be stored on a flat surface and if panels come in contact with water accidentally they must be air-dried prior to installation. Installation surfaces must be dry and level. AnutoneSmooth Primer can be vacuumed post-installation.



## Visual Variants

The visual variants for AnutoneSmooth are realised when the panels are factory or insitu spray painted in a range of bold colours or pastel shades.



## Design Considerations

AnutoneSmooth Square edge must never be butt jointed. Chamfer long edges with staggered short edges work the best. Options include panels with Square or Chamfer edge, staggered and separated by a 4-6 mm gap to create natural grooves. AnutoneSmooth must not be installed at pedestrian height unless the surface is covered with a finishing materials such as AnutoneSpun fabrics system.

## Framework

- T-system for ceilings - exposed grids
- C-system for ceilings, panellings, partitions - concealed
- F-Spline for panellings - fastener-less, quick installation

## Tech Performance

- Non-combustibility – Mass loss 53% @ 750 °C - ISO 1182
- Ignitibility – 'P' - BS 476 Part 5
- Fire Propagation Index – 5.17 - BS 476 Part 6
- Surface Spread – Class I - BS 476 Part 7
- Specific Optical Density of Smoke – Flaming Exposure 26.28 D<sub>m</sub> (Corr) - ASTM E662
- Thermal Conductivity – 0.08 Wm/k - IS 3346

## Environmental Impact

AnutoneSmooth is eco-friendly and wins 15 LEED points, a AnutoneSustain initiative by Anutone®.

## Economics

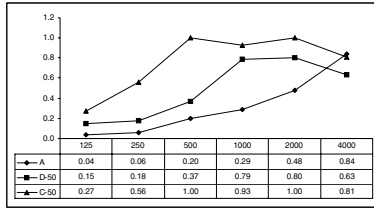
AnutoneSmooth ND4 20mm Chamfer on AnutoneStrut C-system is techno-commercially economical for the lifecycle cost.

## Warranty

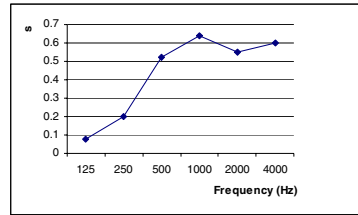
10 years AnutoneSurety - limited warranty - on the assembled system when installed to Anutone's specifications and maintained under the AnutoneSentry AMC programme.

## Acoustical Parameters

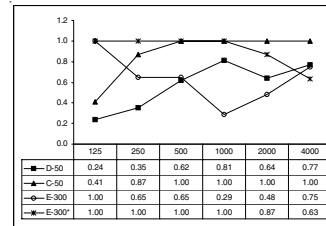
### Anutone Absorption Coefficient as per ISO 354



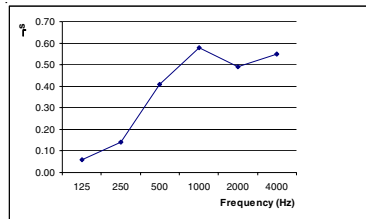
AnutoneSmooth ND4 15mm thick



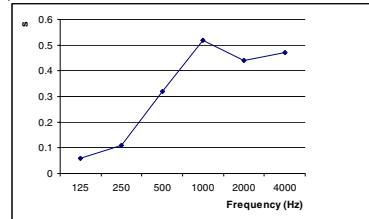
AnutoneSmooth 25mm thick on D-50



AnutoneSmooth ND4 40mm thick



AnutoneSmooth 20mm thick on D-50



AnutoneSmooth 15mm thick on D-50

**NOTE** - Anutone has the capability, expertise and own infrastructure to perform custom acoustics tests for given design as per ISO 354 at its AnutoneScans lab and provide acoustic values of AnutoneSmooth specific to installations.

## Installation Guidelines

**Ceiling (E300 mounting) – Scope** - Selec's protocol performing to acoustical requirements conforming to international standards consisting of Design, Supply, Build scope of AnutoneSmooth, per approved drawings and specifications, by Anutone Acoustics Limited, an ISO 9001 2000 company. **Framework** - AnutoneSkelet T-System, consisting of Main and Cross Tees interlocked at 600 mm centres. **Acoustical panels** - Density ND4; Size 595x595/1195 mm; Thickness 20 mm; Edge profile - Steppe.

**Panelling (C50 mounting) – Scope** - Selec's protocol performing to acoustical requirements conforming to international standards consisting of Design, Supply, Build scope of AnutoneSmooth, per approved drawings and specifications, by Anutone Acoustics Limited, an ISO 9001 2000 company. **Framework** - AnutoneStrut™ C-System, consisting of ASP Cross Channels fixed at 600mm centres, using AnutoneStitch. Channels must be perpendicularly installed in relation to the long edges of the panels. **Acoustical infill** - AnutoneSynth AW 10x50 friction-fitted between the AnutoneProfiles. **Acoustical panels** - Density ND4; Size 600x1200mm; Thickness 20 mm installed on the AnutoneSkelet C-system with AnutoneStitch. Fastener heads are camouflaged with AnutoneSeam. **Joints and finish** - Chamfer long edges, staggered short edges, butt-joined. Caution! No AnutoneSeam or plaster is applied between the joints.

## Installation Drawings



## AnutoneSites

For the latest update on our projects list please visit [www.anutone.com/projects](http://www.anutone.com/projects) or contact AnutoneSquad

## Custom Methodology

The installation of AnutoneSmooth can be custom-designed to suit specific or special project requirements. The methodology includes the entire value-chain - site evaluation, criteria definition, design optimisation, system specs, systems engineering & integration, project management, testing & site validation.

## Ordering Information

Interior application, Installation application, Binder type, Surface finish, Core content, Dimensions, Edge Profile, Painting, Framework, Hardware, Acoustical infill, Packing.



## ANUTONE INTERIORS

(a division of Anutone Acoustics Limited)

231, 7th Cross, Indiranagar 1st Stage,  
Bengaluru 560 038, India  
Phone +9180 2520 3114  
Fax +9180 2520 3115  
info@anutone.com

[www.anutone.com](http://www.anutone.com)

- Bahrain
- Budapest
- Chennai
- Dammam
- Doha
- Dubai
- Jeddah
- Kolkata
- Kuwait
- Manila
- Mumbai
- Muscat
- Nairobi
- New Delhi
- Riyadh



Anutone is member of

