

# Mikro Mat Trax

[www.anutone.com/mattrax.htm](http://www.anutone.com/mattrax.htm)

Release # 1.4 - February 2011

**anutone**<sup>®</sup>  
makes you feel good™

## Key Attributes

The natural tile surface with an extraordinary micro-cellular finish perfectly blending fabulous acoustics with linear aesthetics!

The added advantages of embossed V-grooves sets MAT Trax apart in choice of acoustical tiles for architectural spaces and aids in sound diffusion.

## Typical Applications

MAT Trax is used exposed for acoustical ceilings and wall panellings in educational institutions, public spaces, worship spaces, etc. or concealed in fabric stretching systems like FabStretch.

## Aesthetics

MAT Trax provides a value-added look with V-grooves. Its uniqueness lies in that it can be installed vertically or horizontally or in a combination. Spaces can be made to look taller or longer or zigzag.

Due to MAT Trax featuring chamfered long edges the V-grooves appear continuous and seamless when panels are butt-jointed.

## Features

Density - 600 kgs/m<sup>3</sup>

Sizes - Width - 600mm; Length - 1200 mm

Thickness - 20 mm

Custom sizes - Flexi / odd sizes to suit specific sites and / or applications are not available.

Conforms to clauses of ISO 8335 / ASTM C367 / IS14276

## Accessibility

MAT Trax installed on Strut C-system requires unfastening and refastening of Stitch. Fastener marks can be camouflaged with Seam.

## Framework

Strut C-system for ceilings, panellings, partitions. T-system and H-spline system is not an option.

## Logistics

Thk (mm)	Nos./carton	Carton wt(kgs)	Carton size (mm)
20	08	72	1206L x 606W x 175H

For MAT Trax 1200x600x20 mm. Minimum order quantity - 1 carton. Wooden crating strongly recommended for part loads.

## Site Considerations

MAT Trax must be stored on a flat surface and if tiles come in contact with water accidentally, they must be air-dried prior to installation. Installation surfaces must be dry and level. Orientation of the C-system framework and V-grooves of MAT Trax must follow the approved architectural design and drawings. MAT Trax can be vacuumed post-installation.



## Visual Variants

The visual variants for MAT Trax are realised by tile orientation and surface painting. Tiles can be placed zigzag for an interesting pattern. Tiles can be factory or insitu spray painted in a range of bold colours or pastel shades.

## Design Considerations

MAT Trax features Chamfer profile on the long edges that can be butt-jointed. However, the short edges must be staggered.

MAT Trax can only be installed on a concealed framework like Strut C-System. For ceilings, T-grids is not an option.

Orientation of lighting to highlight the V-grooves must be considered. MAT Trax must not be installed at pedestrian height unless the surface is covered with finishing materials such as the FabStretch fabric stretching system.

## Tech Performance

For the MAT base panel of 15mm thickness and density 650 kg/m<sup>3</sup> tested for fire reaction at FRL, CBRI Roorkee vide Test Report # F(S) 1906 in July-October 2006

- Non-combustibility - Mass loss 52% @ 750 °C - BS 476 Part 4
- Ignitibility - 'P' - BS 476 Part 5
- Fire Propagation Index - 9.00 - BS 476 Part 6
- Surface Spread - Class I - BS 476 Part 7
- Specific Optical Density of Smoke - Flaming Exposure 25.00 Dm (Corr) - ASTM E662
- Thermal Conductivity - 0.1 Wm/k - IS 3346

## Environmental Impact

MAT Trax is an eco-friendly system and wins GBC's 15 LEED points when used in green buildings.

## Economics

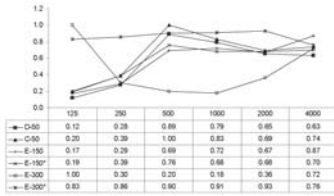
MAT Trax 20mm on Strut C-system is techno-commercially economical for the lifecycle cost of the system.

## Warranty

10 years Surety - limited warranty - on the assembled system when installed to Anutone's specifications and maintained as per instructions.

## Acoustical Parameters

### Sound Absorption Coefficient as per ISO 354



MAT Trax 15 mm thick

**NOTE** - Anutone has the capability, expertise and own infrastructure to perform custom acoustics tests for given design as per ISO 354 at its AnutoneScans lab and provide acoustic values of MAT Trax specific to installations.

## Installation Guidelines

### Panelling (E300\* mounting)

**Scope** – Selec’s protocol performing to acoustical requirements conforming to international standards consisting of Design, Supply, Build of MAT Trax per approved drawings and specifications, by Anutone Acoustics Limited, an ISO 9001 2000 company.

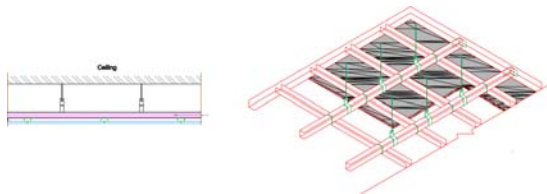
**Framework** – Strut C-System, consisting of ASP Cross Channels fixed at 600mm centres, using Stitch. Channels are suspended from the roof and perpendicularly installed in relation to the long edges of the tiles.

**Acoustical Panels** – MAT Trax; Size 600x1200mm; Thickness 20 mm installed on the Strut C-system with Stitch at 600 mm centres. The short edges of the tiles are staggered.

**Acoustical Infill** - Synth PF 10x50 is placed on the tiles as an overlay.

**Joints and Finish** – Seam is lightly flush-applied to the fastener heads and butt joints sealing them. The finished tiles are then spray painted to choice colour.

## Installation Drawings



## SoundSites

MAT Trax is a relatively newer product and comparatively lesser installed at AnutoneSites.

For the latest update on our projects list please visit [www.anutone.com/projects](http://www.anutone.com/projects) or contact AnutoneSquad.

## Custom Methodology

The installation of MAT Trax can be custom-designed to suit specific or special project requirements. The methodology includes the entire value-chain - site evaluation, criteria definition, noise spectra capture, design optimisation, system specs, systems engineering & integration, project management, testing & site validation.

## Ordering Information

Interior application, Installation application, Dimensions, Framework, Jointing Compound, Acoustic Infill, Packing

**anutone®**  
makes you feel good™

### ANUTONE WALLS & CEILINGS

a division of Anutone Acoustics Limited

231, 7th Cross, Indiranagar 1st Stage, Bengaluru 560 038, India  
Phone +9180 2520 3114 Fax +9180 2520 3115 info@anutone.com

**MUMBAI**

+9122 2643 9732

**DELHI**

+9111 2437 8061

**CHENNAI**

+9144 4305 4935

[www.anutone.com](http://www.anutone.com)



Anutone is member of

