

# Smart Burl

[www.anutone.com/smartburl.htm](http://www.anutone.com/smartburl.htm)

Release # 1.3 - February 2011



## Key Attributes

Smart Burl are smooth-surfaced, seamless-finished interior panels for new-age aesthetics, combined with special acoustics. These panels are uniquely tailored with value-added materials providing enhanced sound absorption, isolation and/or reflection. They fulfil 3 major functions - low frequency absorbers, mid and high frequency reinforcers, broadband isolators.

## Typical Applications

Smart Burl is used exposed for acoustical false ceilings and wall panellings in offices, cinema multiplexes, home theatres, AV rooms, discotheques, bars etc

## Visual Variants

The visual variants to Smart Burl are realised when the panels are insitu spray painted in a range of bold, contrast or pastel colours.

## Features

- Densities
 

250	400	600	800	500	kgs/m <sup>3</sup>
LD3	ND4	HD6	VHD8	VDH™	Code
- Sizes - Width - 600mm; Lengths - 1200 / 2400 mm
- Thickness - 10 / 15 / 20 / 25 / 30 / 40 / 50 mm
- Edges - Square, Taper, Kerf
- Base panel conforms to EN 13168 2001.

## Accessibility

Smart Burl in Skelet T-system makes it modular and dismantable for plenum access to services in the ceiling void.

Smart Burl installed on Strut C-system requires unfastening and refastening of Stitch. Fastener marks can be camouflaged with Seam.

Alternatively, Smart Burl 20mm & above is installed on Strut C-system with H-Spline.

## Logistics

Thk (mm)	Nos./carton	Carton wt*(kgs)	Carton size (mm) 1216L x 616W x 175H
10	15	57	
15	10	51	
20	08	52	
25	06	47	
30	05	58	
40	04	56	Volume 0.131 m <sup>3</sup>
50	03	47	

Note - Part loads must be wooden crated. Minimum order quantity - 1 carton.

## Economics

Smart Burl ND4 20mm on Strut C-system is technologically economical for the lifecycle cost of the system.



## Aesthetics

For ceilings and walls, Smart Burl with Seam applied to butt joints and Skim insitu cross-hatched sprayed, camouflages edge joints and renders a smooth, seamless finish. For ceilings, the panels are laid in Skelet T-system for an exposed grid look.

## Design Considerations

These are panels where blade blinding skims the panel surface. Strong lighting incident to panel surface is not recommended.

## Framework

- T-system for ceilings - exposed grids
- C-system for ceilings, panellings, partitions - concealed
- H-Spline for panellings - fastener-less, installation

## Tech Performance

For base panel

- Non-combustibility - Mass loss 53% @ 750 °C - ISO 1182
- Ignitibility - 'P' - BS 476 Part 5
- Fire Propagation Index - 5.17 - BS 476 Part 6
- Surface Spread - Class I - BS 476 Part 7
- Specific Optical Density of Smoke - Flaming Exposure 26.28 Dm (Corr) - ASTM E662
- Thermal Conductivity - 0.08 Wm/k - IS 3346

## Environmental Impact

Smart Burl is an eco-friendly system and wins GBC's 15 LEED points when used in green buildings.

## Site Considerations

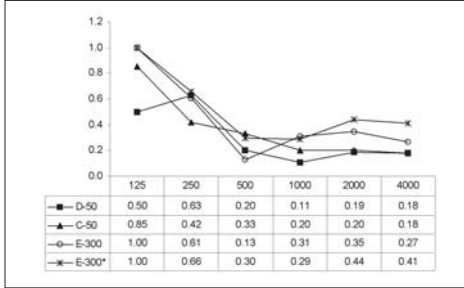
Cartons of Smart Burl must be stored on a flat, dry surface. At no point must panels be allowed to come in contact with water. Individual panels must be carefully removed from the special cartons since the panels are supplied pre-plastered. Smart Burl requires 'soft' handling. Installation surfaces must be dry and level.

## Warranty

10 years Surety - limited warranty - on the assembled system when installed to Anutone's specifications and maintained as per instructions.

## Acoustical Parameters

### Sound Absorption Coefficient as per ISO 354



SSS™ Burl - 20mm thick

**NOTE** - Anutone has the capability, expertise and own infrastructure to perform custom acoustics tests for given design as per ISO 354 at its AnutoneScanslab and provide acoustic values of Smart Burl specific to installations.

## References

### Office

ERA E-Zone Noida

### Auditorium

MSRIT Bangalore  
Airforce Bidar  
Thermax Pune

### Cinema

Fun Multiplex Ambala  
Chaya Lakshmi Creators Chennai  
Bollywood Pune

### Home Theatre

Orbit Communications Kolhapur

## Installation Guidelines

### Panelling (D50 mounting)

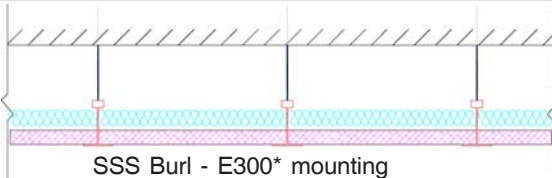
Scope – Selec’s protocol performing to acoustical requirements conforming to international standards consisting of Design, Supply, Build of Smart Burl per approved drawings and specifications, by Anutone Acoustics Limited, an ISO 9001 2000 company.

Framework – Strut C-System, consisting of ASP Cross Channels fixed at 600mm centres, using Stitch. Channels must be perpendicularly installed in relation to the long edges of the panels.

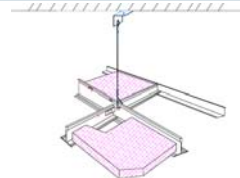
Acoustical Panels – Smart Burl; Density ND4; Size 600x1200mm; Thickness 20 mm, Taper edge installed on the Strut C-system with Stitch at 300x600 mm centres. The short edges of the panels are staggered

Joints and Finish – Seam is flush-applied to the butt joints sealing them. Skim is then sprayed in 3x-cross-hatched pattern continuously across the complete surface. The finished panels are then spray painted to choice colour.

### Installation Drawings



SSS Burl - E300\* mounting



### AnutoneSites

For the latest update on our projects list please visit [www.anutone.com/projects](http://www.anutone.com/projects) or contact AnutoneSquad.

## Custom Methodology

The installation of Smart Burl can be custom-designed to acoustical needs to suit specific or special project requirements. The methodology includes the entire value-chain - site evaluation, criteria definition, noise spectra capture, design optimisation, system specs, systems engineering & integration, project management, acoustic testing & site validation.

## Ordering Information

Interior application, Installation application, Density, Dimensions, Edge Profile, Painting, Framework, Hardware, Acoustical infill, Packing.

**anutone®**  
makes you feel good™

### ANUTONE WALLS & CEILINGS

a division of Anutone Acoustics Limited

231, 7th Cross, Indiranagar 1st Stage, Bengaluru 560 038, India  
Phone +9180 2520 3114 Fax +9180 2520 3115 info@anutone.com

MUMBAI

+9122 2643 9732

DELHI

+9111 2437 8061

CHENNAI

+9144 4305 4935

[www.anutone.com](http://www.anutone.com)



Anutone is member of

