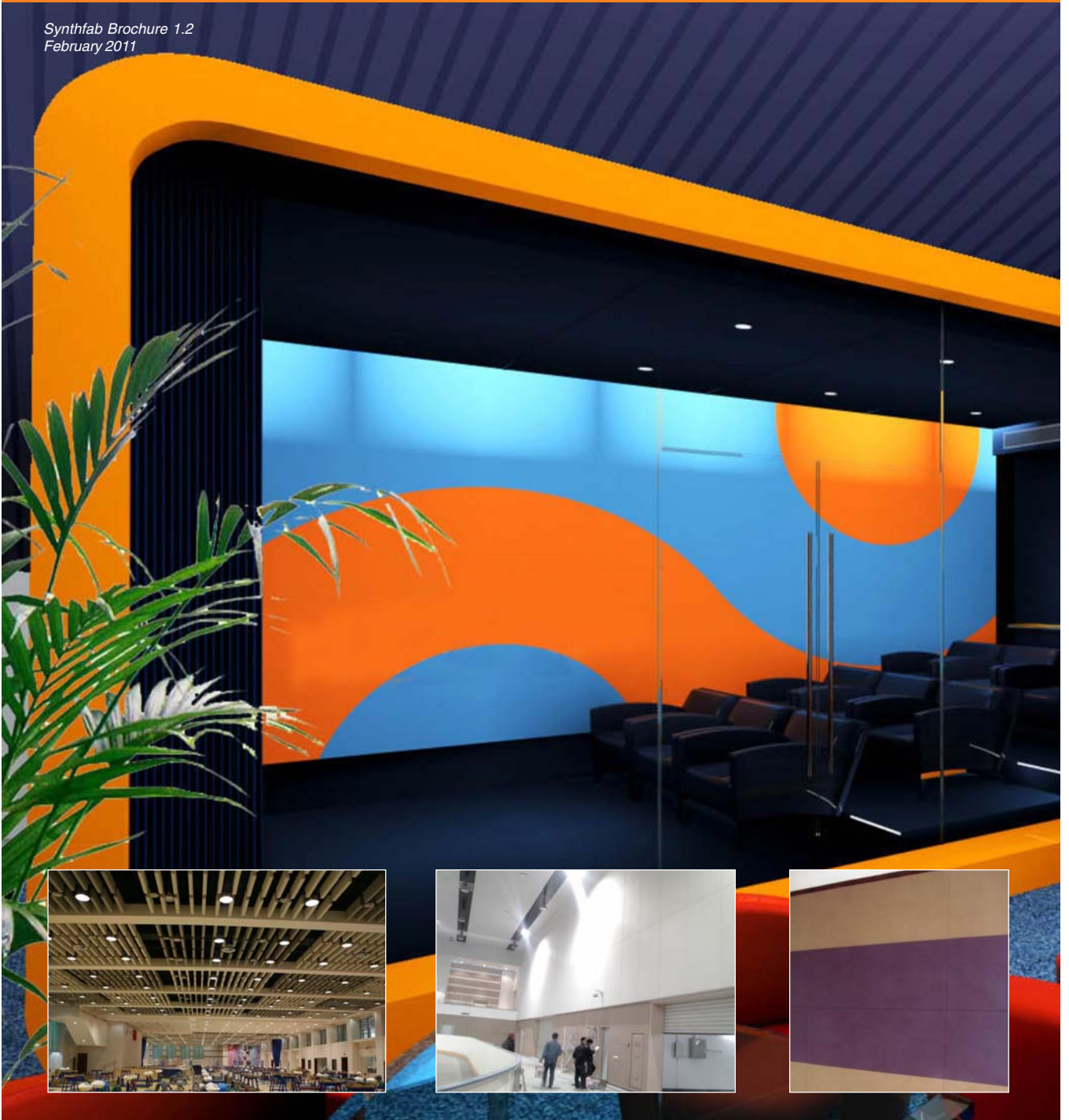


Synth Fab

FABRIC WALLS & CEILINGS

www.anutone.com/synthfab.htm

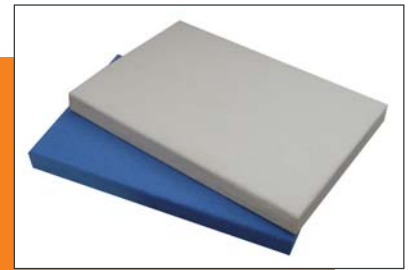
*Synthfab Brochure 1.2
February 2011*



SynthFab

Anutone presents yet another fabulous choice in fabric walls with modular panels for better, quieter interiors. SynthFab panels boast a core of SynthHD, Anutone's popular brand of polyester-based infill, and a smart wrap of AnutoneSpunFR, an inherently flame-retardant fabric.

The panel core is the most important feature. SynthHD is thermally-bonded (no resins), chemically-free polyester fibres fused under pressure to form a high-density wadding that is rigid with sharp lines.



Key Attributes

SynthFab wall and ceiling panels can be the preferred choice for any designer since they bring many things to the space they are chosen for: visual appeal, aural comfort, ease of install, eco-logic, and safety.

Applications

- SynthFab panels meet the requirements of
- Offices, A / V conference rooms, boardrooms
 - Auditoria, performing spaces
 - Cinema - multiplexes and single-screens
 - Hotels - banquet halls, guest rooms
 - Public spaces, convention centres
 - Studios, preview theatres
 - Learning centres

System Features

SynthFab panels consist of a dimensionally stable, high-density SynthHD with resin-hardened edge protection. SpunFR fabrics are completely adhered to the face of the panel and returned to the back for a full finished edge.

Dimensions

- Thickness - 25mm for adhesive / 30mm for Z-clip
- Size - 600/1200 x 600/1200mm

Edge Profile

- Square

Warranty

SynthFab panels come with a limited three-year warranty when used on walls, and one-year on ceilings.

Aesthetics

SynthFab panels come with a richness of colours that make them visually beautiful. A wide variety of fabric shades are available. All that the designer has to choose is the fabric shade. See back cover.

Visual Variants - Fabric shades

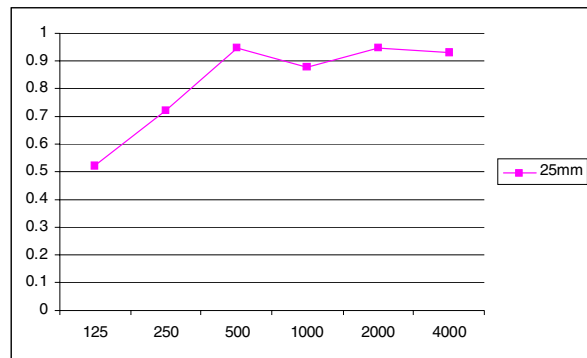


Note: Fabric colours are subject to variation from batch to batch and change without prior notice.

Acoustics

SynthFab panels bring superlative acoustic performance. NRC with D5 mounting as per ISO 354 / ASTM C423

	Frequency (Hz)						NRC
	125	250	500	1000	2000	4000	
25mm	0.52	0.72	0.95	0.88	0.95	0.93	0.87



Tech Performance

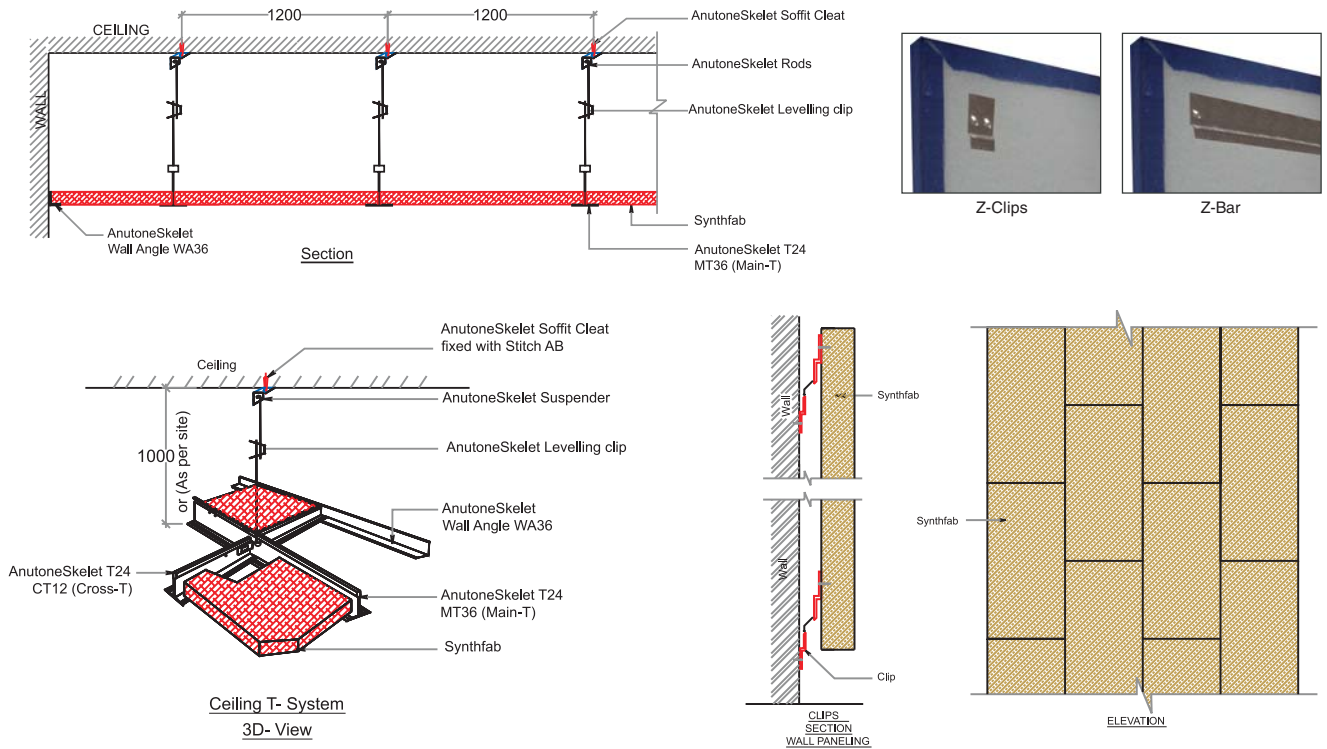
SynthFab panels are tested to international standards for acoustics and fire-rating.

Eco-Friendly

SynthFab panels are made from a core of SynthHD which is thermally-bonded, chemically-free, polyester micro-fibres, a downstream derivative of the petroleum refining industry. It is both recycled and recyclable - a unique feature in fabric ceilings and walls.

No resins are used for bonding. SynthHD is itch-free and does not lend to suspending particulates in the atmosphere thus improving IAQ (Indoor Air Quality). Synth is VOC-free (Volatile Organic Compounds), toxin-free. It is, thus, completely healthy and hygienic - another unique feature in fabric ceilings and walls.

Installation



Specifications

SI#	Description	SynthFab
1	Thickness (mm)	25/30
2	Size (mm)	Width up to 1,200mm, Length up to 1,200mm
3	Core	Synth with resin hardened edge protection
4	Nominal Density (Kg/m ³)	100
5	Weight (Kg/m ²)	2.5
7	NRC / STC	NRC upto 0.9
8	Fire	Class I/A rating
9	Moisture Resistance (%)	RH90
10	Light Reflectance (%)	NA
11	Warranty	1/3 years
12	Installation	Ceiling - Skelet; Wall - Adhesive / Z-clipsZ-bar
13	Colour	36 pleasing colours
14	Maintenance	Vacuum cleaning

Bill of Quantities (BoQ) - 100m²

SI #	Description	Units	SynthFab	
	Size	mm	1200 x 600 x 25	
			Wall Paneling Z - Clips	False Ceiling T - 24
1	T - 24	1m	-	252
2	Z - Clips	nos	700	-
3	SynthFab Panels	m ²	100	100
4	Anchor Bolt, Soffit Cleat, Butterfly clip, Suspension wire/Rod, Spacer Bar	LS	-	LS
5	Labour	hrs	2	8
	Estimated Installed Cost / m²	₹		

1m - Linear meter, m² - Square meter, LS - LumpSum, hrs - Hours

* The above indicated values are very approximate and dependent on several variables. They are for guidance only and subject to change without prior notice.



anutone®
makes you feel good™

ANUTONE WALLS & CEILINGS

a division of Anutone Acoustics Limited

231, 7th Cross, Indiranagar 1st Stage, Bengaluru 560 038, India
Phone +9180 2520 3114 Fax +9180 2520 3115 info@anutone.com

MUMBAI

+9122 2643 9732

DELHI

+9111 2437 8061

CHENNAI

+9144 4305 4935

www.anutone.com



Anutone is member of

