

Anutone Synthfab Greenest Panel on Planet Earth!



Anutone presents yet another fabulous choice in fabric walls with modular panels for better, quieter interiors. Synthfab panels boast a core of SynthHD, Anutone's popular brand of polyester-based infill, and a smart wrap of SpunFR, an inherently flame-retardant fabric.

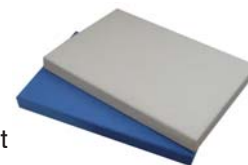
The panel core is the most important feature. SynthHD is thermally-bonded (no resins), chemically-free polyester fibres fused under pressure to form a high-density wadding that is rigid with sharp lines. More, it is EHS-compliant as it is VOC-free and does not itch, irritate or lower the IAQ.

Anutone Synthfab is available in standard sizes of 600 / 1200 x 600 / 1200 and a thickness of 25mm for adhesive install or 30mm for Z-clip install.

To know more ask for the [SynthFab Brochure 1.0](#) or visit www.anutone.com/fabrics.htm

HIGHLIGHTS

- Green credentials
 - Does not contain glassfibre or wood
 - Made from recycled content
 - Panel can be recycled
- Fire, acoustics and thermal rated
- 36 pleasing colours in fabrics
- Joint lines are neat and crisp
- Lightweight – easy handling
- Adhesive or Z-clips – no framework
- Space saving install – max 30mm thick
- Factory-finished, lab-certified



[Email to friend](#)

[Print this page](#)